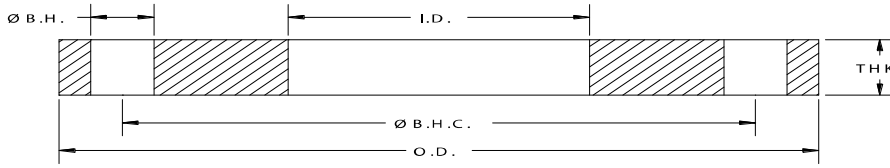


Exhaust Flanges

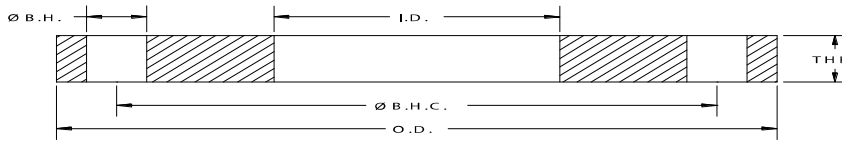
Domestic & Import





Round Exhaust Steel Flanges

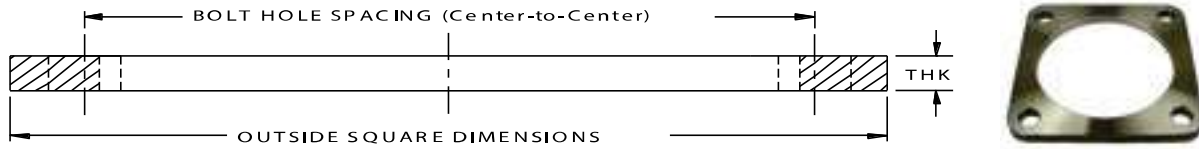
API Part Number	Size	O.D.	I.D.	Ø B.H.C	Ø B.H	# B.H	THK	Weight lbs
PFE0500 (CAT)	5	7.72	5.06	6.86	0.410	8	0.500	3.90
PFE0800 (CAT)	8	11.00	8.13	9.88	0.560	8	0.500	6.25
PFE1000 (CAT)	10	13.50	10.13	12.44	0.500	12	0.500	9.00
PFE1200 (CAT)	12	16.00	12.06	14.80	0.560	12	0.500	7.25
PFE1400 (CAT)	14	18.00	14.06	17.00	0.560	12	0.500	14.50
PFE1600	16	23.50	16.10	21.25	0.810	16	0.500	28.80
PFE1800	18	22.50	18.13	20.88	0.630	16	0.500	19.00
PFE0500C (Cummins)	5	8.00	5.13	7.19	0.560	8	0.500	3.30
PFE0600C (Cummins)	6	8.00	6.13	7.19	0.560	8	0.500	2.80
PFE0600D	6	9.50	6.06	8.19	0.440	6	0.500	6.00
PFE1000D (Detroit)	10	13.00	10.06	11.88	0.630	8	0.500	8.00
MIT0800	8	12.60	8.06	11.02	0.860	8	0.500	N/A
MIT1000	10	15.16	10.00	13.56	0.870	12	0.500	N/A
MIT1200	12	16.93	11.97	15.35	1.000	12	0.500	N/A
MIT1400	14	18.90	14.06	17.13	1.000	12	0.500	N/A



1/2" Thick Reducing Steel Flanges

API Part Number	Size	O.D.	I.D.	Ø B.H.C	Ø B.H	# B.H	THK	Weight lbs
PFHR0400-306	4 x 3	9.00	3.06	7.50	0.750	8	0.500	8.0
PFHR0400-357	4 x 3	9.00	3.57	7.50	0.750	8	0.500	7.2
PFHR0500-406	5 x 4	10.00	4.06	8.50	0.875	8	0.500	8.8
PFHR0500-457	5 x 4	10.00	4.57	8.50	0.875	8	0.500	8.2
PFHR0600-406	6 x 4	11.00	4.06	9.50	0.875	8	0.500	12.0
PFHR0600-457	6 x 4	11.00	4.57	9.50	0.875	8	0.500	11.4
PFHR0600-506	6 x 5	11.00	5.06	9.50	0.875	8	0.500	10.8
PFHR0600-563	6 x 5	11.00	5.63	9.50	0.875	8	0.500	9.6
PFHR0800-406	8 x 4	13.50	4.06	11.75	0.875	8	0.500	17.7
PFHR0800-506	8 x 5	13.50	5.06	11.75	0.875	8	0.500	16.8
PFHR0800563	8 x 5	13.50	5.63	11.75	0.875	8	0.500	16.1
PFHR0800-606	8 x 6	13.50	6.06	11.75	0.875	8	0.500	15.6
PFHR0800-672	8 x 6	13.50	6.72	11.75	0.875	8	0.500	14.7
PFHR1000-672	10 x 6	16.00	6.72	14.25	1.000	12	0.500	26.0
PFHR1000-806	10 x 8	16.00	8.06	14.25	1.000	12	0.500	20.0
PFHR1200-806	12 x 8	19.00	8.06	17.00	1.000	12	0.500	32.0
PFHR1200-1006	12 x 10	19.00	10.06	17.00	1.000	12	0.500	28.5
PFHR1400-806	14 x 8	21.00	8.06	18.75	1.125	12	0.500	40.1
PFHR1400-1006	14 x 10	21.00	10.06	18.75	1.125	12	0.500	36.1
PFHR1400-1206	14 x 12	21.00	12.06	18.75	1.125	12	0.500	32.0
PFHR1600-806	16 x 8	23.50	8.06	21.25	1.125	16	0.500	52.5
PFHR1600-1206	16 x 12	23.50	12.06	21.25	1.125	16	0.500	41.0
PFHR1800-1406	18 x 14	25.00	14.06	22.75	1.250	16	0.500	44.9
PFHR2000-1206	20 x 12	27.50	14.06	25.00	1.250	20	0.500	48.0
PFHR2200-2019	20x 22	29.50	20.19	27.25	1.380	20	0.500	48.5

DC# 0122



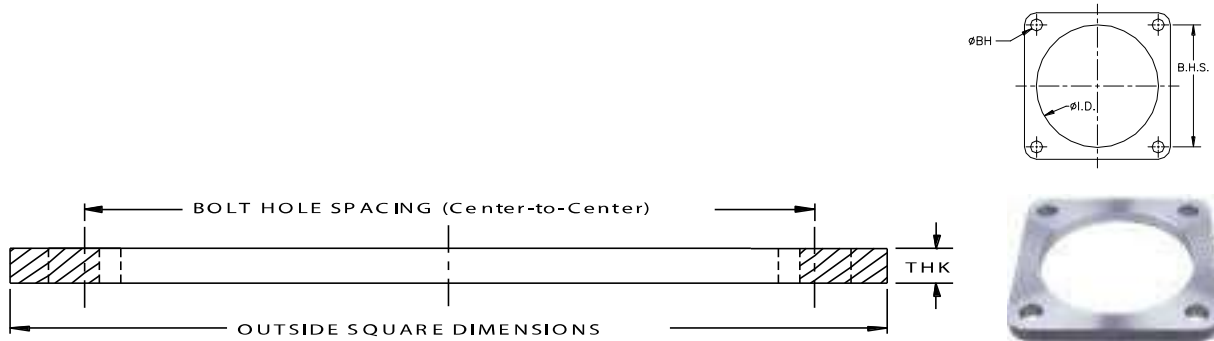
Square Exhaust Steel Flanges

API Part Number	Size	Outside Square	I.D.	Bolt Hole Spacing CTR-to-CTR	Ø B.H	# B.H	THK	Corner Radius	Weight lbs
PFES0313	3	5.50 X 5.50	3.12	4.13	0.560	4	0.500	0.688	3.0
PFES0357	3	5.50 X 5.50	3.57	4.13	0.560	4	0.500	0.688	3.0
PFES0400	4	5.50 X 5.50	4.06	4.13	0.560	4	0.500	0.688	2.6
PFES0500	5	6.50 X 6.50	5.06	5.00	0.660	4	0.500	0.688	3.0
PFES0500-75BH	5	6.50 X 6.50	5.06	5.00	0.750	4	0.500	0.688	3.0
PFES0600	6	7.75 X 7.75	6.06	6.00	0.810	4	0.500	1.000	4.5

Notes:

a. Flange material is steel (to AWWA C207-13 specifications).

ALL DIMENSIONS ARE IN INCHES UNLESS OTHERWISE STATED.



Stainless Steel Square Exhaust Steel Flanges

API Part Number	Size	Outside Square	I.D.	Bolt Hole Spacing CTR-to-CTR	Ø B.H	# B.H	THK	Corner Radius	Weight lbs
SPFES0313	3	5.50 x 5.50	3.12	4.13	0.560	4	0.500	0.688	3.0
SPFES0357	3	5.50 x 5.50	3.57	4.13	0.560	4	0.500	0.688	3.0
SPFES0400	4	5.50 x 5.50	4.06	4.13	0.560	4	0.500	0.688	2.6
SPFES0500	5	6.50 x 6.50	5.06	5.00	0.660	4	0.500	0.688	3.0
SPFES0500-75BH	5	6.50 x 6.50	5.06	5.00	0.750	4	0.500	0.688	3.0
SPFES0600	6	7.75 x 7.75	6.06	6.00	0.810	4	0.500	1.000	4.5

Notes:

a. All Stainless Steel flanges available in Dual Grade 304/304L or 316/316L.

b. Meets ANSI class 150 pattern.

ALL DIMENSIONS ARE IN INCHES UNLESS OTHERWISE STATED.